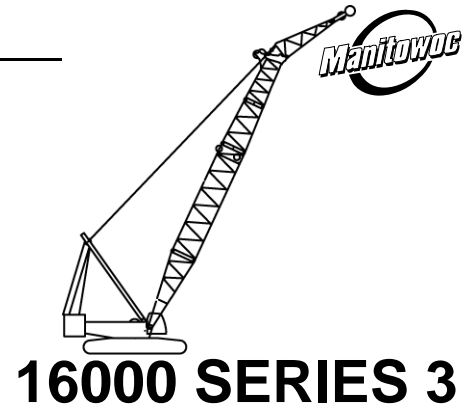


Liftcrane Boom Extended Upper Point Capacities

**Boom No. 58 HL with 23.0 ft Extended
Upper Boom Point
332,000 lb Crane Counterweight
120,000 lb Carbody Counterweight
Crawler Machine on a Barge
0 Degree thru 3 Degree Machine List
No Travel - 360 Degree Rating - Two Swing Drives**



LIFTING CAPACITIES: Lifting capacities are for a crawler machine when operating on a barge. Machine shall be positively secured to prevent shifting. Lifting capacities for various boom lengths and operating radii are for freely suspended loads and do not exceed 75% of a static tipping load. Capacities based on structural competence are denoted by an asterisk (*).

Upper boom point (upper sheave) capacity for liftcrane service with single part whip line is 30,000 lb. In all cases, upper boom point capacities cannot exceed those listed for extended upper boom point (lower sheave) capacity.

Weight of all load blocks, hooks, weight ball, slings, hoist lines, etc., beneath upper boom point sheaves, is considered part of extended upper boom point load. Boom is not to be lowered beyond radii where combined weights are greater than rated capacity. Where no capacity is shown, operation is not intended or approved.

OPERATING CONDITIONS: Machine to operate on a firm uniformly supporting surface with machine list not to exceed degrees noted. Refer to boom rigging **No. A10415**, Wire Rope Specification chart **No. 8674-B**, Counterweight Arrangement chart **No. 8682-A** and Wind Conditions chart **No. 8688-A**. Crane operator judgment must be used to allow for dynamic load effects of swinging, hoisting or lowering, wind conditions, as well as adverse operating conditions and physical machine depreciation. Refer to Operator's Manual for operating guidelines.

OPERATING RADIUS: Operating radius is horizontal distance from axis of rotation at barge deck to center of vertical hoist line or load block.

BOOM ANGLE: Boom angle in degrees (°) is angle between horizontal and centerline of boom butt and inserts, and is an indication of operating radius. In all cases, operating radius shall govern capacity.

EXTENDED UPPER BOOM POINT ELEVATION: Extended upper boom point elevation is vertical distance from barge deck to centerline of extended upper boom point (lower sheave) shaft.

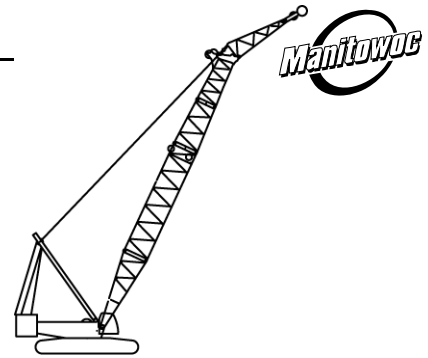
MACHINE EQUIPMENT: Machine equipped with two swing drives, 34 ft crawlers, 60 in. treads, 32 ft live mast, 26 part boom hoist reeving, boom support straps, 332,000 lb crane counterweight, two 30,000 lb and four 15,000 lb carbody counterweights.

Maximum Boom Lengths Lifted Unassisted		
List	Over End of Blocked Crawlers	Over Side of Crawlers
	Boom Length	Boom Length
0 Degree	295.3 ft	275.6 ft
1 Degree	275.6 ft	275.6 ft
2 Degree	275.6 ft	275.6 ft
3 Degree	275.6 ft	275.6 ft
Load block, hook and weight ball on barge deck at start.		

Lower boom point must be removed when extended upper boom point is attached.

Liftcrane Boom Extended Upper Point Capacities

Boom No. 58 HL with 23.0 ft Extended
 Upper Boom Point
 332,000 lb Crane Counterweight
 120,000 lb Carbody Counterweight
 Crawler Machine on a Barge
 0 Degree thru 3 Degree Machine List
 No Travel - 360 Degree Rating - Two Swing Drives



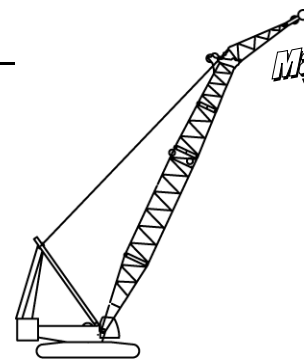
16000 SERIES 3

Oper. Radius Feet	Boom Angle Deg.	Boom Point Elev. Feet	0 Degree List Boom Capacity Pounds	1 Degree List Boom Capacity Pounds	2 Degree List Boom Capacity Pounds	3 Degree List Boom Capacity Pounds	Oper. Radius Feet
216.5 ft							
50	82.5	243.4	215,200 *				50
55	81.2	242.3	215,200 *	185,700 *			55
60	80.0	241.2	215,200 *	183,900 *	152,500 *	129,500 *	60
65	78.8	240.0	212,300	181,100 *	151,900 *	129,000 *	65
70	77.5	238.6	190,800	174,800	151,400 *	128,600 *	70
75	76.3	237.1	172,600	159,100	146,700	128,100 *	75
80	75.0	235.6	157,200	145,500	134,800	125,100	80
85	73.8	233.8	143,800	133,700	124,300	115,700	85
90	72.5	232.0	132,200	123,400	115,000	107,400	90
95	71.2	230.0	122,000	114,200	106,700	99,900	95
100	69.9	227.9	112,900	106,000	99,300	93,200	100
105	68.6	225.7	104,900	98,700	92,600	87,100	105
110	67.3	223.3	97,600	92,000	86,600	81,500	110
115	65.9	220.8	91,000	86,000	81,100	76,500	115
120	64.5	218.1	85,100	80,500	76,000	71,800	120
125	63.2	215.3	79,600	75,500	71,400	67,500	125
130	61.8	212.3	74,700	70,900	67,100	63,600	130
135	60.4	209.2	70,100	66,600	63,200	59,900	135
140	58.9	205.8	65,900	62,700	59,500	56,500	140
145	57.4	202.3	62,000	59,100	56,100	53,300	145
150	56.0	198.6	58,300	55,700	52,900	50,300	150
155	54.4	194.7	55,000	52,500	50,000	47,600	155
160	52.9	190.5	51,800	49,500	47,200	44,900	160
165	51.3	186.1	48,900	46,700	44,600	42,500	165
170	49.6	181.5	46,100	44,100	42,100	40,200	170
175	48.0	176.6	43,500	41,700	39,800	38,000	175
180	46.2	171.4	41,000	39,300	37,600	35,900	180
185	44.4	165.8	38,700	37,100	35,500	33,900	185
190	42.6	159.9	36,500	35,100	33,500	32,100	190
195	40.6	153.5	34,400	33,100	31,700	30,300	195
200	38.6	146.7	32,400	31,200	29,900	28,600	200
205	36.5	139.4	30,500	29,400	28,200	27,000	205



Liftcrane Boom Extended Upper Point Capacities

Boom No. 58 HL with 23.0 ft Extended
 Upper Boom Point
 332,000 lb Crane Counterweight
 120,000 lb Carbody Counterweight
 Crawler Machine on a Barge
 0 Degree thru 3 Degree Machine List
 No Travel - 360 Degree Rating - Two Swing Drives

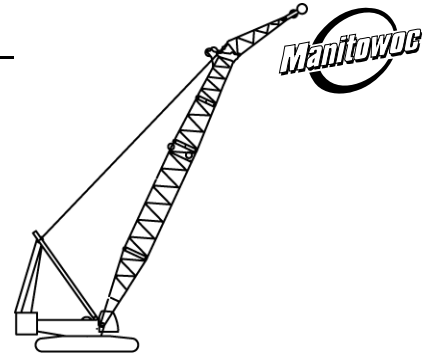


16000 SERIES 3

Oper. Radius Feet	Boom Angle Deg.	Boom Point Elev. Feet	0 Degree List Boom Capacity Pounds	1 Degree List Boom Capacity Pounds	2 Degree List Boom Capacity Pounds	3 Degree List Boom Capacity Pounds	Oper. Radius Feet
236.2 ft							
55	81.9	262.4	215,200 *	174,300 *			55
60	80.8	261.4	215,200 *	172,500 *	142,500 *		60
65	79.7	260.2	211,500	170,100 *	141,700 *	117,200 *	65
70	78.5	259.0	189,900	167,900 *	141,200 *	116,700 *	70
75	77.4	257.6	171,700	157,000	140,600 *	116,300 *	75
80	76.2	256.2	156,100	143,500	132,000	115,800 *	80
85	75.0	254.6	142,800	131,800	121,700	112,600	85
90	73.9	252.9	131,100	121,500	112,500	104,400	90
95	72.7	251.1	120,800	112,300	104,300	97,100	95
100	71.5	249.2	111,700	104,200	97,000	90,500	100
105	70.3	247.2	103,600	96,900	90,400	84,500	105
110	69.1	245.0	96,300	90,300	84,400	79,000	110
115	67.9	242.7	89,700	84,300	78,900	74,000	115
120	66.7	240.3	83,800	78,800	73,900	69,400	120
125	65.4	237.8	78,300	73,800	69,300	65,200	125
130	64.2	235.1	73,300	69,200	65,100	61,300	130
135	62.9	232.2	68,700	65,000	61,200	57,700	135
140	61.6	229.2	64,500	61,000	57,600	54,300	140
145	60.3	226.1	60,600	57,400	54,200	51,100	145
150	59.0	222.8	57,000	54,000	51,000	48,200	150
155	57.6	219.3	53,600	50,800	48,100	45,400	155
160	56.2	215.7	50,400	47,900	45,300	42,900	160
165	54.8	211.8	47,500	45,100	42,700	40,400	165
170	53.4	207.8	44,700	42,500	40,300	38,100	170
175	52.0	203.5	42,100	40,000	38,000	36,000	175
180	50.5	199.1	39,600	37,700	35,800	33,900	180
185	48.9	194.3	37,300	35,500	33,700	32,000	185
190	47.4	189.3	35,100	33,500	31,800	30,100	190
195	45.8	184.1	33,000	31,500	29,900	28,400	195
200	44.1	178.5	31,100	29,600	28,100	26,700	200
205	42.4	172.6	29,200	27,900	26,500	25,100	205
210	40.6	166.3	27,400	26,200	24,900	23,600	210
215	38.8	159.5	25,700	24,500	23,300	22,100	215
220	36.8	152.3	24,100	23,000	21,900	20,700	220

Liftcrane Boom Extended Upper Point Capacities

Boom No. 58 HL with 23.0 ft Extended
 Upper Boom Point
 332,000 lb Crane Counterweight
 120,000 lb Carbody Counterweight
 Crawler Machine on a Barge
 0 Degree thru 3 Degree Machine List
 No Travel - 360 Degree Rating - Two Swing Drives



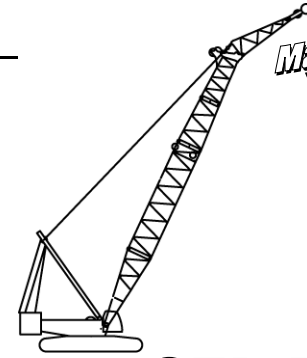
16000 SERIES 3

Oper. Radius Feet	Boom Angle Deg.	Boom Point Elev. Feet	0 Degree List Boom Capacity Pounds	1 Degree List Boom Capacity Pounds	2 Degree List Boom Capacity Pounds	3 Degree List Boom Capacity Pounds	Oper. Radius Feet
255.9 ft							
55	82.5	282.4	201,500 *				55
60	81.5	281.5	196,800 *	148,600 *			60
65	80.4	280.4	192,600 *	147,600 *	117,700 *		65
70	79.3	279.2	188,500 *	146,800 *	117,000 *	95,800 *	70
75	78.3	278.0	170,800	145,900 *	116,400 *	95,300 *	75
80	77.2	276.6	155,200	141,700	115,800 *	94,900 *	80
85	76.1	275.2	141,800	130,000	115,200 *	94,400 *	85
90	75.1	273.6	130,100	119,700	110,200	94,000 *	90
95	74.0	272.0	119,800	110,700	102,100	93,600 *	95
100	72.9	270.2	110,700	102,500	94,900	87,900	100
105	71.8	268.4	102,500	95,200	88,300	82,000	105
110	70.7	266.4	95,200	88,700	82,400	76,700	110
115	69.6	264.3	88,600	82,700	77,000	71,700	115
120	68.4	262.1	82,600	77,200	72,000	67,200	120
125	67.3	259.7	77,200	72,200	67,500	63,000	125
130	66.2	257.3	72,200	67,700	63,300	59,200	130
135	65.0	254.7	67,600	63,400	59,400	55,600	135
140	63.8	252.0	63,300	59,500	55,800	52,300	140
145	62.6	249.1	59,400	55,900	52,400	49,200	145
150	61.4	246.2	55,700	52,500	49,300	46,200	150
155	60.2	243.0	52,400	49,400	46,400	43,500	155
160	59.0	239.8	49,200	46,400	43,600	41,000	160
165	57.7	236.3	46,200	43,600	41,000	38,600	165
170	56.5	232.7	43,500	41,000	38,600	36,300	170
175	55.2	229.0	40,800	38,600	36,300	34,100	175
180	53.9	225.0	38,400	36,300	34,200	32,100	180
185	52.5	220.9	36,100	34,100	32,100	30,200	185
190	51.2	216.5	33,900	32,000	30,200	28,400	190
195	49.8	211.9	31,800	30,100	28,300	26,600	195
200	48.4	207.2	29,800	28,200	26,600	25,000	200
205	46.9	202.1	28,000	26,500	24,900	23,400	205
210	45.4	196.8	26,200	24,800	23,300	21,900	210
215	43.8	191.2	24,500	23,200	21,800	20,500	215
220	42.2	185.3	22,900	21,600	20,300	19,100	220
225	40.6	179.0	21,300	20,200	18,900	17,800	225
230	38.9	172.4	19,800	18,800	17,600	16,500	230
235	37.1	165.2	18,400	17,400	16,300	15,300	235
240	35.2	157.6	17,100	16,100	15,100	14,100	240



Liftcrane Boom Extended Upper Point Capacities

Boom No. 58 HL with 23.0 ft Extended
Upper Boom Point
332,000 lb Crane Counterweight
120,000 lb Carbody Counterweight
Crawler Machine on a Barge
0 Degree thru 3 Degree Machine List
No Travel - 360 Degree Rating - Two Swing Drives

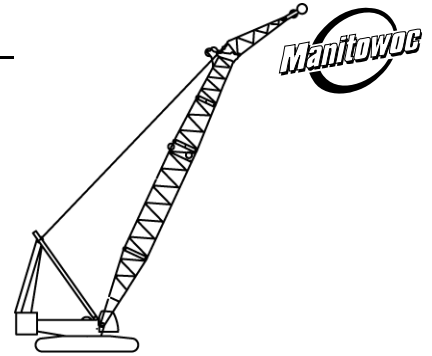


16000 SERIES 3

Oper. Radius Feet	Boom Angle Deg.	Boom Point Elev. Feet	0 Degree List Boom Capacity Pounds	1 Degree List Boom Capacity Pounds	2 Degree List Boom Capacity Pounds	3 Degree List Boom Capacity Pounds	Oper. Radius Feet
275.6 ft							
55	83.0	302.4	193,700 *				55
60	82.0	301.5	190,100 *	126,800 *			60
65	81.0	300.5	186,600 *	125,900 *			65
70	80.1	299.4	183,500 *	125,000 *	98,600 *		70
75	79.1	298.3	169,800	124,100 *	97,900 *	79,200 *	75
80	78.1	297.0	154,200	123,200 *	97,300 *	78,800 *	80
85	77.1	295.7	140,700	122,400 *	96,800 *	78,300 *	85
90	76.1	294.2	128,900	117,900	96,200 *	77,900 *	90
95	75.1	292.7	118,600	108,800	95,600 *	77,500 *	95
100	74.1	291.0	109,400	100,700	92,600	77,000 *	100
105	73.1	289.3	101,300	93,400	86,100	76,600 *	105
110	72.0	287.5	93,900	86,900	80,200	74,100	110
115	71.0	285.5	87,300	80,900	74,800	69,300	115
120	70.0	283.5	81,300	75,500	69,900	64,800	120
125	68.9	281.4	75,800	70,500	65,400	60,700	125
130	67.9	279.1	70,800	65,900	61,200	56,900	130
135	66.8	276.7	66,200	61,700	57,400	53,300	135
140	65.7	274.3	61,900	57,800	53,800	50,000	140
145	64.6	271.7	58,000	54,200	50,500	47,000	145
150	63.5	268.9	54,300	50,800	47,300	44,100	150
155	62.4	266.1	50,900	47,700	44,400	41,400	155
160	61.3	263.1	47,700	44,700	41,700	38,900	160
165	60.2	260.0	44,800	42,000	39,100	36,500	165
170	59.0	256.7	42,000	39,400	36,700	34,200	170
175	57.9	253.3	39,400	36,900	34,400	32,100	175
180	56.7	249.8	36,900	34,600	32,300	30,100	180
185	55.5	246.1	34,600	32,400	30,300	28,200	185
190	54.3	242.2	32,400	30,400	28,300	26,400	190
195	53.0	238.1	30,300	28,400	26,500	24,600	195
200	51.8	233.9	28,400	26,600	24,800	23,000	200
205	50.5	229.5	26,500	24,800	23,100	21,400	205
210	49.2	224.8	24,700	23,100	21,500	19,900	210
215	47.8	220.0	23,000	21,500	20,000	18,500	215
220	46.5	214.9	21,400	20,000	18,600	17,200	220
225	45.1	209.5	19,800	18,500	17,200	15,900	225
230	43.6	203.9	18,400	17,100	15,800	14,100 *	230
235	42.1	198.0	17,000	15,800	14,600	12,000 *	235
240	40.6	191.8	15,600	14,500	12,800 *	10,000 *	240
245	39.0	185.1	14,300	13,300	10,600 *	8,100 *	245
250	37.3	178.1	13,000	11,200 *	8,400 *		250
255	35.6	170.7	11,800	8,900 *			255

Liftcrane Boom Extended Upper Point Capacities

Boom No. 58 HL with 23.0 ft Extended
 Upper Boom Point
 332,000 lb Crane Counterweight
 120,000 lb Carbody Counterweight
 Crawler Machine on a Barge
 0 Degree thru 3 Degree Machine List
 No Travel - 360 Degree Rating - Two Swing Drives



16000 SERIES 3

Oper. Radius Feet	Boom Angle Deg.	Boom Point Elev. Feet	0 Degree List Boom Capacity Pounds
295.3 ft			
60	82.5	321.5	168,600 *
65	81.6	320.5	165,000 *
70	80.7	319.5	161,500 *
75	79.8	318.5	158,200 *
80	78.8	317.3	153,200
85	77.9	316.0	139,700
90	77.0	314.7	127,900
95	76.0	313.2	117,500
100	75.1	311.7	108,300
105	74.1	310.1	100,200
110	73.2	308.4	92,800
115	72.2	306.6	86,200
120	71.3	304.7	80,100
125	70.3	302.7	74,600
130	69.3	300.6	69,600
135	68.3	298.4	65,000
140	67.3	296.1	60,700
145	66.3	293.7	56,800
150	65.3	291.2	53,100
155	64.3	288.6	49,700
160	63.3	285.9	46,500
165	62.2	283.0	43,600
170	61.2	280.0	40,800
175	60.1	276.9	38,200
180	59.1	273.7	35,700
185	58.0	270.3	33,400
190	56.9	266.8	31,200
195	55.7	263.1	29,100
200	54.6	259.3	27,100
205	53.5	255.4	25,300
210	52.3	251.2	23,500
215	51.1	246.9	21,800
220	49.9	242.4	20,200
225	48.6	237.7	18,700
230	47.4	232.8	17,200
235	46.1	227.6	15,800
240	44.8	222.3	14,400
245	43.4	216.6	13,100
250	42.0	210.7	11,900
255	40.6	204.5	10,700
260	39.1	197.9	9,500
265	37.5	191.0	8,400
270	35.9	183.6	7,400